

# ADAM TECH®

ADVANCED INTERCONNECT PRODUCTS AND SYSTEMS

info@adam-tech.com www.adam-tech.com

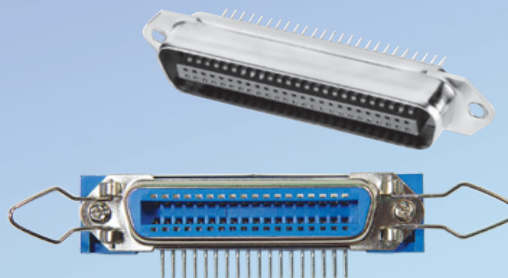
## DVI CONNECTOR

- Digital & Analog versions.
- Straight and Right Angle PCB mount.
- High Speed performance and low cost.
- Single or Dual Stacked.



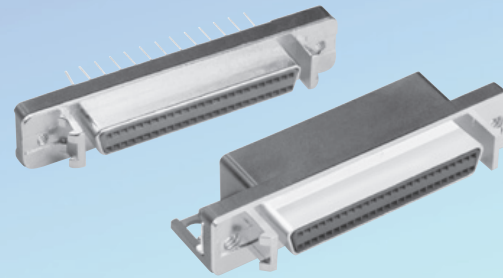
## CENTRONICS / MINIATURE RIBBON CONNECTORS

- Straight pin or Right Angle pin PCB mount.
- Solder cup, Flat Cable IDC versions.
- 14P, 24P, 36P & 50P.
- Multiple panel and PCB mounting options.



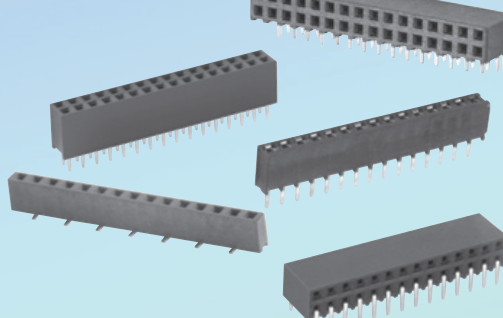
## 1.27mm SCSI II/III RIGHT ANGLE

- Right Angle & Vertical mount
- 20P – 120P, Metal EMI protection front shell
- Multiple Panel and PCB mounting options



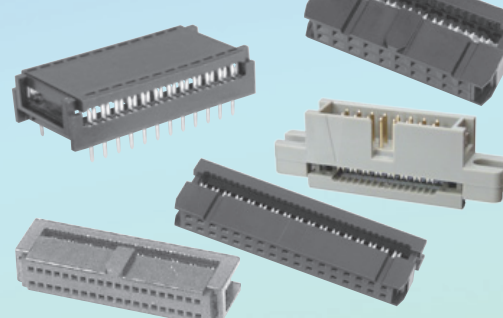
## RECEPTACLE STRIPS

- Many Pitches including: 0.8, 1.0, 1.27, 2.0, 2.54, 3.96mm
- Straight, Right Angle
- Thru-hole & SMT



## IDC CONNECTORS

- 1.27, 2.00, 2.54mm Pitches
- 8P – 100P
- Dual Row Sockets, PCB Plugs
- Card edge, D-Subminiatures



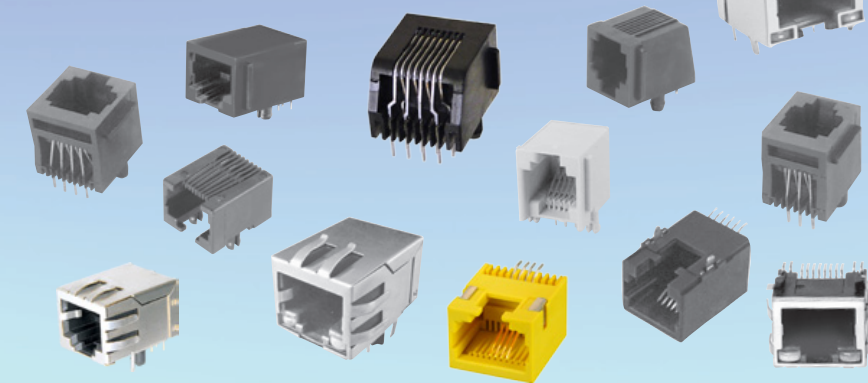
## AC INLET & OUTLET POWER CONNECTORS

- Solder, Quick connect or PCB pin mount
- Inlet & Outlets with Power Line Filters
- Snap in or Screw in Flange Mount
- Fuse & Fuse with Switch versions
- IEC & Mini-IEC types
- IEC-60320, CEE-22 Compliant

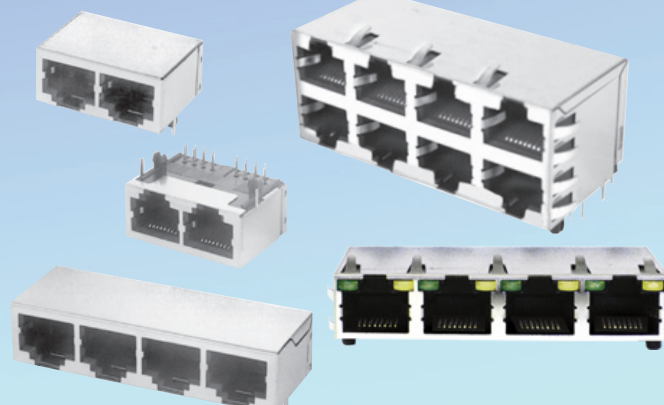


## MODULAR JACKS

- 4, 6, 8 & 10 Positions, Thru-hole, SMT, Right Angle, Vertical, Shielded, LEDs, Ganged, Stacked, Integrated Magnetics

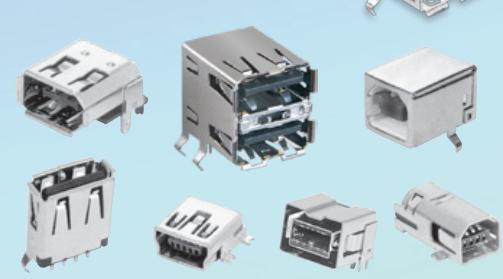


## MODULAR JACKS, GANGED & STACKED



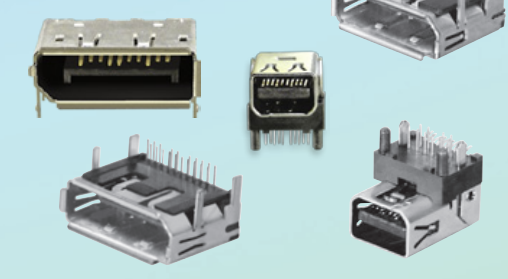
## USB, MINI-USB, MICRO USB & FIREWIRE, MINI-FIREWIRE

- USB 2.0 & 3.0 Standard, Mini & Mirco versions.
- Types A, AB, AB1, B, B4 & B5.
- Firewire & Mini Firewire styles.
- Thru-hole, SMT, Stacked versions.



## DISPLAY PORT & MINI-DISPLAY PORT

- High band width digital interface.
- Small package, shielded design.
- Supports color depth 6,8,10,12, 16 bits per color components.



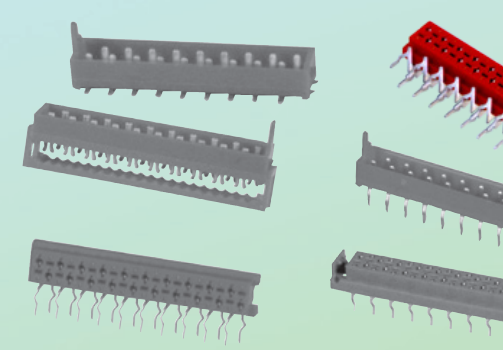
## HDMI & MINI HDMI SERIES

- Standard or Mini types, Sturdy, Fully Shielded.
- Eliminates multiple connectors and cables.
- Up to 5Gbps in single interface.
- Thru-hole or SMT mount, Flange mounting option.



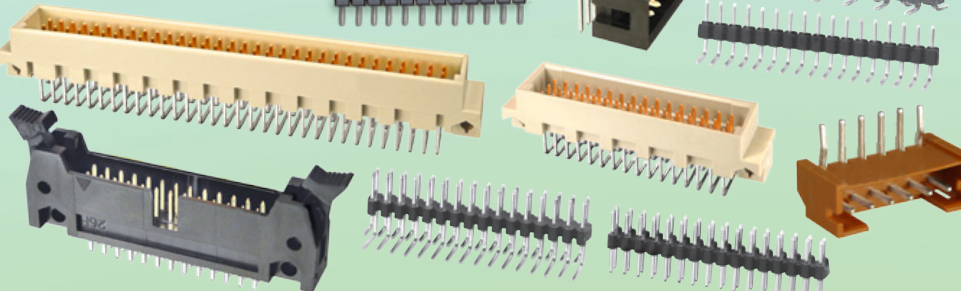
## MINI FLEX CONNECTOR

- 1.27 (.050") Pitch
- Cable-PCB, Wire-PCB, PCB-PCB Styles
- Superior design with Location Pegs & Friction Lock Mating



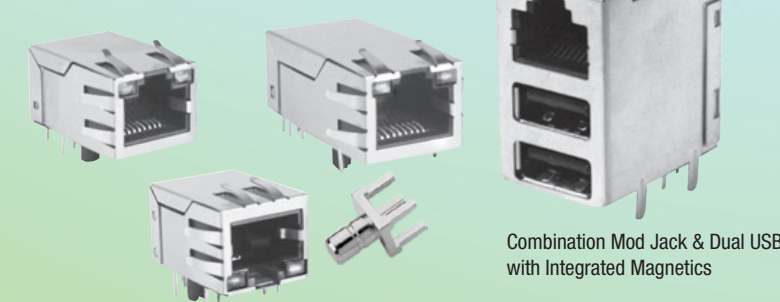
## PIN HEADERS & SHROUDED HEADERS

- Many Pitches including: 0.8, 1.0, 1.27, 2.0, 2.54, 3.96mm
- Straight, Right Angle
- Thru-hole & SMT
- Custom pin lengths



## MODULAR JACKS WITH INTEGRATED MAGNETICS & LEDS

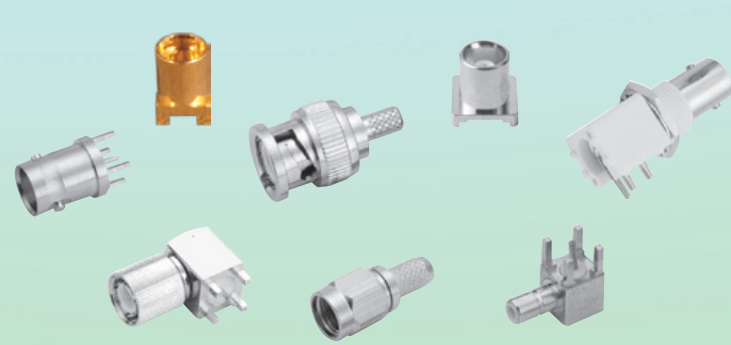
- Single, stacked & ganged configurations
- Choice of transformer styles
- Panel grounds & LED options



Combination Mod Jack & Dual USB with Integrated Magnetics

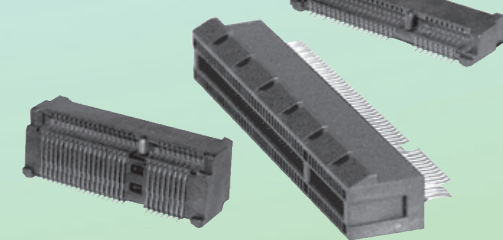
## RF CONNECTORS

- Wide selection of cable, panel mount & PCB connectors
- BNC, TNC, FMA, FME, SMA, SMB, N, F PAL, Mini-UHF, MCX, MMCX, W.FL & 1.6/5.6



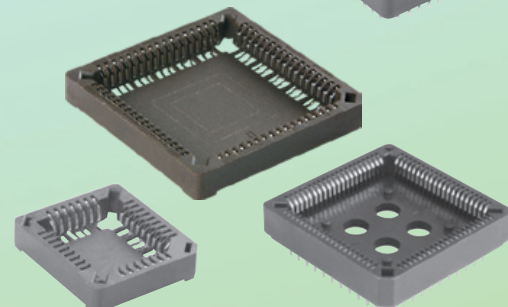
## PCI EXPRESS, MINI PCI EXPRESS, MINI PCI, VESA & EISA

- 2.54, 1.27, 1.0 & 0.8mm Pitch
- Standard and Hi density versions
- x1, x4, x8 & x16 Lane configurations
- Coexists with Standard PCI
- Hot Plug & Hot Swap Enabled



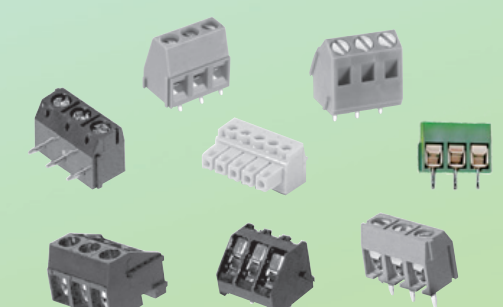
## PLCC SOCKETS

- Full range 20p – 100p
- Precision Stamped contacts
- Thru-hole and SMT types
- Standard and Hi-Temp versions



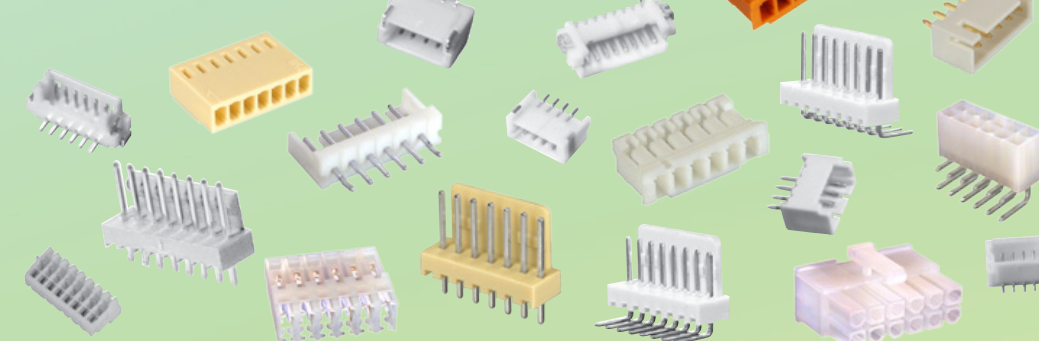
## EURO BLOCKS

- Multiple sizes and profiles
- Top, Side and Angled entry
- Two piece pluggable versions
- 3.5, 3.81, 5.0, 5.08, 7.0, 7.62, 10.0, 10.16, 15.0mm Pitches



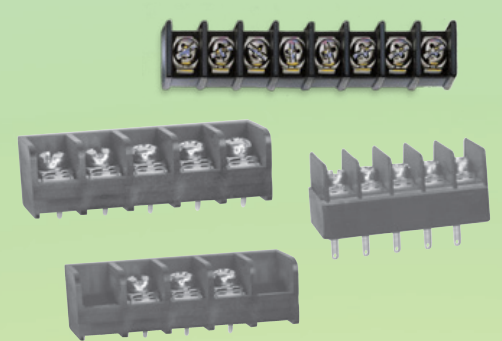
## HEADER & HOUSING SYSTEMS

- 0.8, 1.0, 1.25, 1.5, 2.0, 2.5 & 2.54mm Pitches
- Straight, Right Angle and SMT styles
- Sure fit, Fine Pitched & Polarized



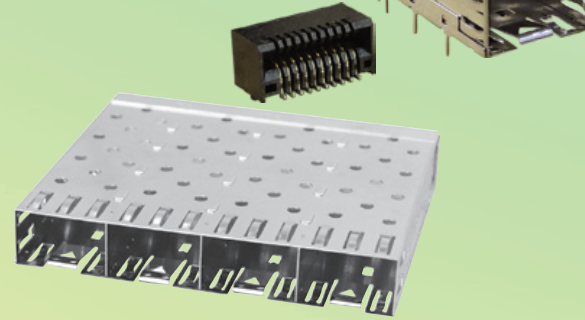
## TERMINAL BLOCKS

- Wide range of sizes and profiles
- Choice of multiple terminations
- 02 – 30 positions



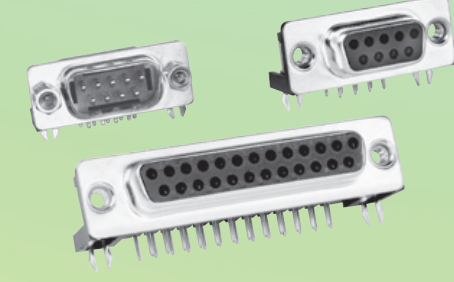
## SMALL FORM FACTOR

- Industry Standard Compatibility.
- Interfaces with both fiber optic and copper networking modules.
- Single, Stacked or Ganged Cages.



## D-SUBMINIATURE RIGHT ANGLE PCB MOUNT

- Positions: 9, 15, 25, 37, 50
- Compatible with all industry standard D-Subs
- .318" (8.08) & .590" (15.00) Footprints
- Wide assortment of mounting options



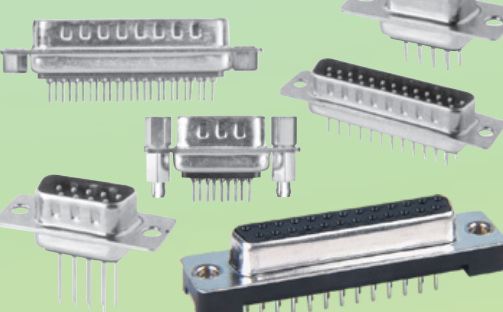
## D-SUBMINIATURE IDC-FLAT CABLE CONNECTOR

- Positions: 9, 15, 25, 37, 50
- Compatible with all industry standard D-Subs
- Quickly terminates to 1.27 Flat Cable



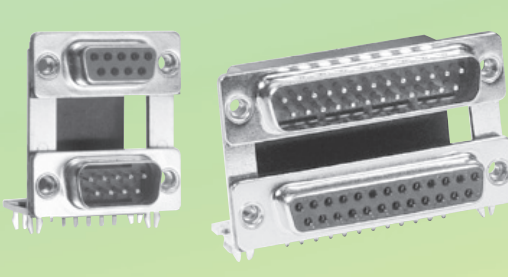
## D-SUBMINIATURE STRAIGHT PCB MOUNT

- Positions: 9, 15, 25, 37, 50
- Compatible with all industry standard D-Subs
- Wide assortment of mounting options



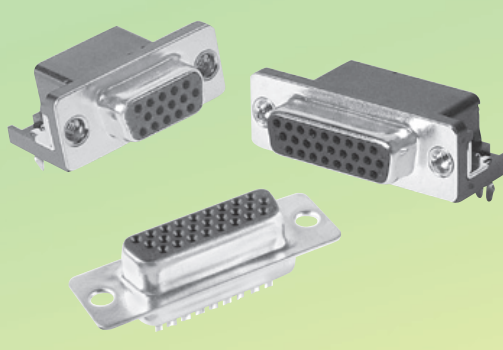
## D-SUBMINIATURE DUAL PORT, STACKED RIGHT ANGLE PCB MOUNT

- Positions: 9, 15, 25, 37, 50
- Compatible with all industry standard D-Subs
- Many connector combinations to choose from



## HIGH DENSITY D-SUBS

- Positions: 15, 26, 44, 62, 78
- High Density pin count in standard size shell
- Straight, Right Angle, Solder Cup, Crimp/Poke variations



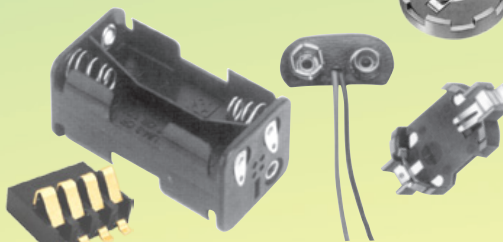
## EMI/RFI POWER LINE FILTERS

- Numerous terminations for Chassis or PCB Mount
- Integrated Power Inlet/Outlet
- Power Entry modules available
- Superior Common & differential mode attenuation



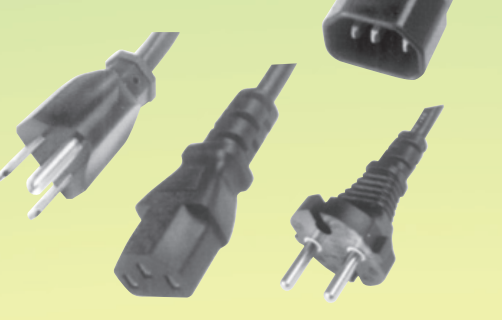
## BATTERY HOLDERS, BATTERY SNAPS, MOBILE BATTERY CONNECTORS

- Single and multi package Alkaline battery holders.
- Selection of Lithium Coin cell holders
- PCB Mobile Battery holders.
- Wide selection of 9 Volt battery Snaps.



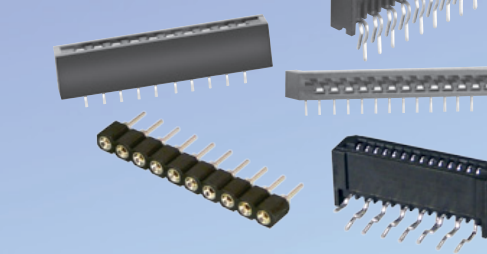
## POWER CORDS

- International selection of plugs and cable
- Sturdy High Reliability design
- Worldwide Safety Agency approvals
- Standard and custom power cords



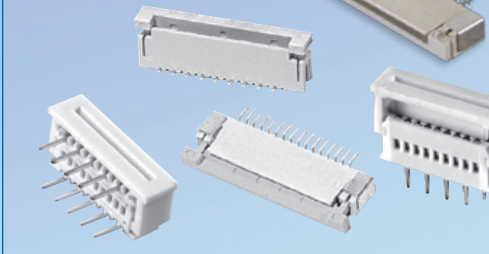
### FLEX CIRCUIT CONNECTOR - LIF TYPE

- 0.3, 0.5, 0.8, 1.0 & 1.25mm Pitches.
- LIF and ZIF types.
- Precision Stamped High Pressure contacts.
- Thru-hole or SMT versions.
- 03- 30 Positions



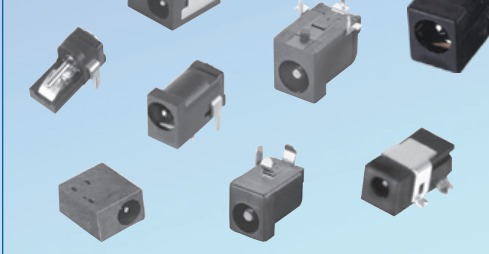
### FLEX CIRCUIT CONNECTOR - ZIF TYPE

- 0.3, 0.5, 0.8, 1.0 & 1.25mm Pitches.
- LIF and ZIF types.
- Precision Stamped High Pressure contacts.
- Thru-hole or SMT versions.
- 03- 30 Positions



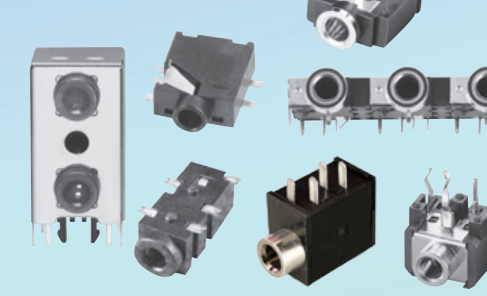
### DC POWER JACKS

- Miniature & Sub-Miniature.
- PCB and panel mounting versions.
- Wide range of center pin sizes.
- Thru-hole or SMT mounting.



### AUDIO JACKS

- Miniature & Sub-Miniature styles
- Broad range of switching configurations
- Ganged and Stacked versions
- PCB or panel mounting types
- Thru-hole or SMT mounting



### RCA JACKS

- Wide range of body styles
- Ganged and Stacked versions
- Industry standard compatibility



### DIN JACKS

- Wide range of styles
- 3 - 13 positions
- Shielded or Unshielded
- PCB mount and Panel mount versions



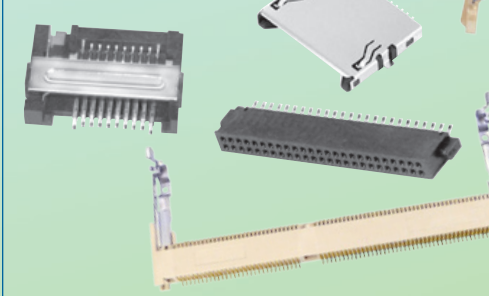
### MINI DIN JACKS

- Wide range of styles
- 3 - 13 positions
- Shielded or Unshielded
- PCB mount and Panel mount versions



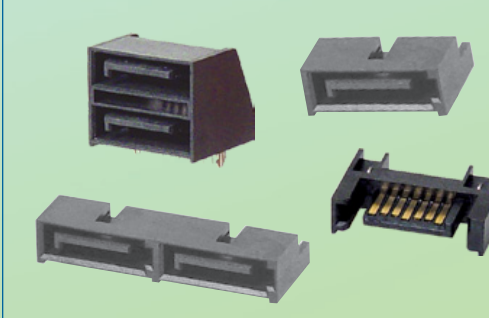
### MEMORY CONNECTORS

- Memory Sticks
- Smart Media
- Compact Flash
- Secure Digital
- PCMCIA



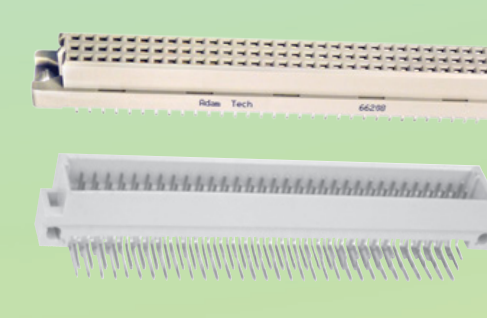
### SATA SERIES

- Meets SCA Interconnection Standards.
- Hot Plug capability with power and signal contacts.
- Single and top/bottom or side/side ports.
- Shielded, Open Frame, Thru-hole & SMT styles.



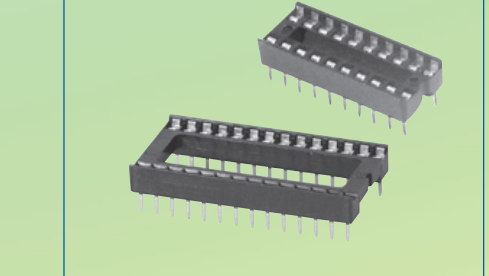
### DIN 41612

- Industry standard compatible
- Multiple body sizes and types
- 16 - 96 positions
- 2, 3 & 4 Row styles



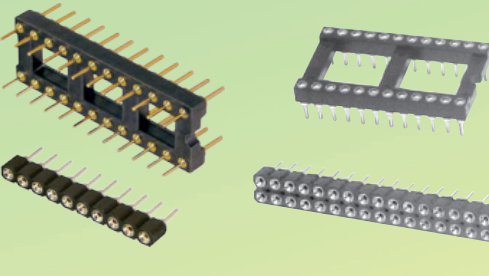
### IC SOCKETS

- High Pressure contact system
- 7.62 (.300") or 15.24 (.600") Centerline Footprint
- 06P - 48P Positions
- Anti-Solder Wicking, Machine insertable



### SCREW MACHINE SOCKETS & TERMINAL STRIPS

- 1.0, 1.27, 2.0 & 2.54mm Pitches
- High Pressure Contacts
- Single or Dual Row
- Straight, Right Angle and SMT mounting



**ADAM TECH**  
ADVANCED INTERCONNECT PRODUCTS AND SYSTEMS

info@adam-tech.com  
www.adam-tech.com

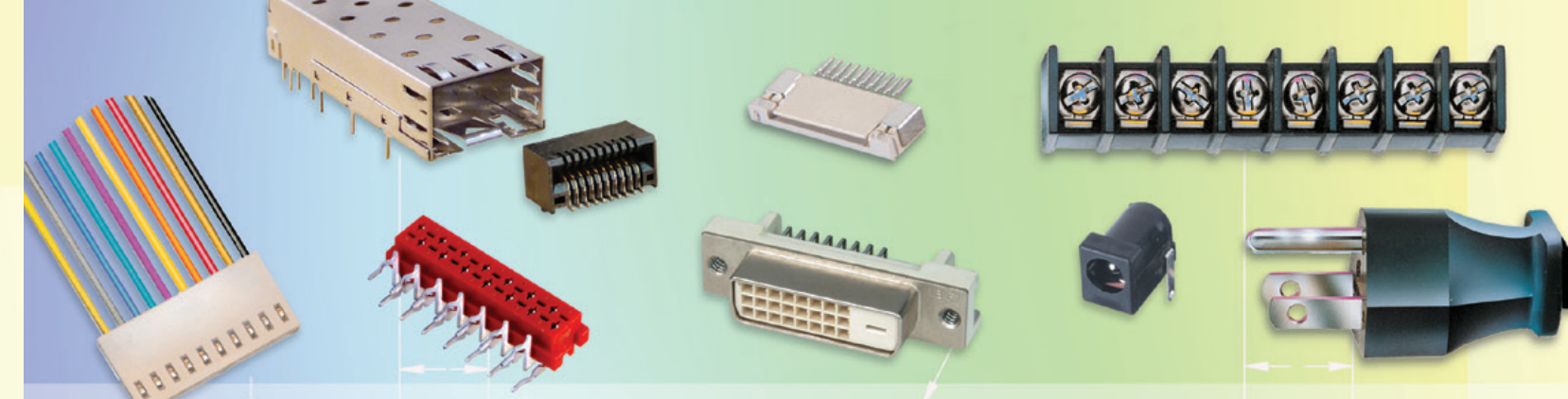
Adam Tech • USA  
909 Rahway Ave | Union, NJ 07083 | USA  
Tel: 908.687.5000 | Fax: 908.687.5710  
Email: info@adam-tech.com  
www.adam-tech.com

Adam Tech • TAIWAN  
5F-17, No.14, Lane 609, Sec. 5, Chongsin Rd.  
Taipei City | Taipei County 241 | Taiwan (R.O.C.)  
Tel: 886-2 2999 8028 | Fax: 886-2 2999 8062  
Email: sales@adam-tech.com  
www.adam-tech.com.tw

Adam Tech • CHINA  
Songgang Town | Bao An County | Shenzhen City  
Guangdong Province | China  
Tel: 886-2 2999 8028 | Fax: 886-2 2999 8062  
Email: factory@adam-tech.com  
www.adam-tech.com.cn

Adam Tech • EUROPE  
www.adam-tech.com  
Email: info@adam-tech.com

Adam Tech • INDIA  
SRA-84A, Shipra Riveira  
Indirapuram  
Ghaziabad India 201010  
Email: india@adam-tech.com



**ADAM TECH**  
ADVANCED INTERCONNECT PRODUCTS AND SYSTEMS

info@adam-tech.com  
www.adam-tech.com

Adam Tech is pleased to provide you with our full line brochure in our 26<sup>th</sup> year of business.

It is our continuing goal to offer a wide range of connectors and cable assemblies from our Taiwan and China manufacturing facilities with one simple promise: We will provide you with the **Highest Quality Product** with the **Best Service Available** at the **Lowest Possible Price.**

